

KOENIG & BAUER

alphaJET – continuous Inkjet



we're on it.



We live „Made in Germany“

For more than 45 years we have been developing and manufacturing high quality coding technology products at our site in Veitshöchheim, Germany. Our focus is on first-class quality, outstanding performance and all this in combination with unbeatable reliability. We're on it.

Uncompromising reliability
Coding
with an outstanding value for money.

Continuous Inkjet (CIJ) coding is ideal when speed and legibility of characters are important for applying variable dates directly at the production line.

In addition to precise printing results, alphaJET systems offer you a very high degree of reliability in everyday production. To meet your individual coding requirements, the Koenig & Bauer Coding portfolio offers you suitable models for all applications.

Versatile, irrespective of industry

Food and Sweets

Mark your product plastic packaging, tin-plate, cardboard or film, with a current date, batch number and codes – according to your wishes. If required, simply add your individual promotion.



Beverages and Dairy

No matter whether you pack in glass, PET, cans, paper, foil, composite packaging, foil or bags: You will obtain a permanent and high-contrast coding.

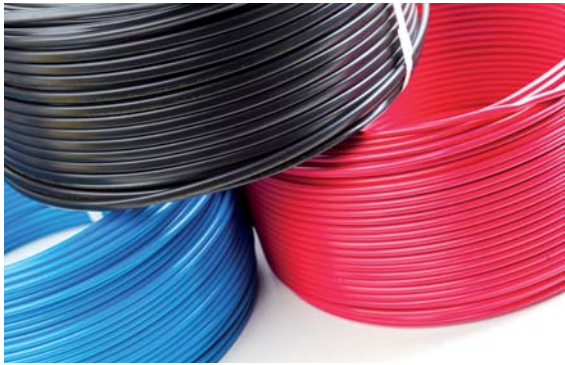


Cosmetics, pharmaceuticals and drugstore products

Designs and high-quality graphic compositions are printed accurately and precisely, also on glass and plastic.

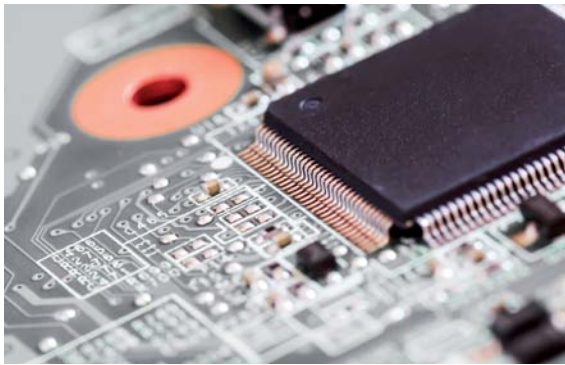


alphaJET continuous inkjet printers mark perfectly in all industries, on a wide variety of materials and surfaces.



Cable and tubes

Regardless of the environmental conditions, you can mark cables, pipes, wires or hoses, clearly and legibly; even at very high speeds. We offer you high-contrast inks in various colours and the best adhesive properties for your application.



Electronics and components

Semiconductors, sensors, terminals, connectors, printed circuit boards, etc. – Mark your product in detail with a company logo, batch number, 1D or 2D codes for traceability, quality assurance and legal specifications.



Automotive

Datamatrix code, QR code, logo and other data in excellent readability and sharpness. Protect original products from counterfeiting. Get a clear identification by means of a precise marking.

Thanks to simple, intuitive operation and intelligent software solutions, you get the best performance and gain around

> 20%
productivity

From high-quality materials in a modern, quality-assured production, coding systems are built according to the latest state of the art with an

uptime > 99%

Achieve the lowest consumption on the market, minimum operating costs and absolutely calculable follow-up costs

> 27%
savings

Do you want to make the most of savings potentials?

The alphaJET has the most efficient solvent recovery system RE-SOLVE Ultra. This saves you money every day. Clever financing solutions (e.g. rental or pay per code) and well thought logistics and service concepts increase your savings potential.

Your coding should not lead to a loss of quality of the print image even with increasing production?

alphaJET printers have been the fastest continuous inkjet printers on the market for years with an excellent print quality and are ready to increase your production output.

In a nutshell.

You want more colour contrast for your coding?

You can operate alphaJET printers with pigmented ink. Our large ink portfolio, from high-contrast to foodsafe to well adherent ink for challenging materials, our selection has the right answer for your requirements.

Are your company's production facilities located internationally?

We offer you a competent sales and service team worldwide. The alphaJET does not only print in other languages, its colour touch display can be easily adapted to many language variants (e.g. Arabic, Cyrillic, Chinese and many more).

Is simple integration / control important to you?

The alphaJET has the matching interfaces to be easily connected to your machinery. Its smart integration offers you all possibilities for the future. Incidentally, you can also centrally operate, monitor and control all alphaJET printers with the modular PC software code-M and even verify the print image in real time with code-M camera.

Is the space in your production line very limited?

A print head with compact dimensions and a supply hose up to 6 m length enable convenient integration even in tight spaces. In addition, the alphaJET also can print from the side, from above, at an angle or from below.

Technical specifications alphaJET models



	mondo	into	evo
Performance			
Line speed max.	780 m/min	950 m/min	950 m/min
Line speed at 2.5 mm character width	385 m/min	460 m/min	460 m/min
Max. lines	5	5	8
Print head			
Nozzle size	62 µm	55 / 70 µm	55 / 70 µm
Active Ink Flow	-	✓	✓
Supply hose length	3 m	4 m	4 / 6 m
90°-angled print head	-	✓	✓
Ink			
Standard	✓	✓	✓
High-contrast	-	✓	✓
Special	✓	✓	✓
Operation			
Touchscreen	8.4"	10.4"	10.4"
Camera interface	✓	-	✓
code-M	✓	✓	✓
Special software	-	-	✓
Safety			
Protection class*	IP 65	IP 65	IP 65
RE-SOLVE Ultra*	✓	✓	✓
Dimensions (H x W x L; mm)			
Housing	455 x 350 x 290, 18 kg	620 x 320 x 320, 26 kg	700 x 320 x 320, 31 kg
Print head	145 x 40 x 40, 2 kg	145 x 40 x 40, 2 kg	145 x 40 x 40, 2 kg

alphaJET Continuous Inkjet printers ensure accurate results and excellent reliability. Our portfolio offers powerful models for any application.



tempo	pico	duo
1.300 m/min	1.300 m/min	950 m/min
600 m/min	695 m/min	460 m/min
4	5	16
50 µm	42 µm	55 / 70 µm
✓	✓	✓
4 / 6 m	4 / 6 m	4 / 6 m
✓	✓	✓
✓	✓	✓
✓	✓	✓
✓	✓	✓
10.4"	10.4"	10.4"
✓	✓	✓
✓	✓	✓
✓	✓	✓
IP 65	IP 65	IP 65
✓	✓	✓
700 x 320 x 320, 31 kg	700 x 320 x 320, 31 kg	each 510 x 320 x 320, 31 kg
145 x 40 x 40, 2 kg	145 x 40 x 40, 2 kg	145 x 40 x 40, 2 kg

*both integrated as standard



Easy integration into your production line

Unique details and functional accessories
make your coding even better



Display

A large, full-colour touch screen

- simplifies intuitive operation
- provides real time information about the coding process
- displays the print text in the editor WYSIWYG

Software solutions

Extend the alphaJET with a software solution that is convenient for you. Many state-of-the-art solutions are included as standard with your alphaJET. Simplify your operation and avoid incorrect settings (e.g. with a hand-held scanner). You can conveniently prepare texts from the desktop, control and monitor your production with one or more modules of the code-M software suite.

Camera interface

Take advantage of camera-based production reliability. Combined marking and verification of variable texts and codes in real time is an optimal solution with code-M camera.

Print head

- Active Ink Flow ensures optimum ink viscosity. The result is a consistent superior print quality.
- The compact design of only 145 x 40 x 40 mm allows integration even when space is limited. The print head supply hose is also available up to 6 m length.
- Save unnecessary traversing units by rotating the print image.

Supplement your alphaJET with functional accessories



Mobile cart



Camera



Handheld scanner



Cleaning device



Signal beacon (external)



Cable guide unit

More freedom in coding

Font / Lines	Print sample	max. line speed for the font shown/lines (m/min)	
		evo / into 55 µm	pico
m5	ABCDEFGH 1234567890	347.4	525
m7x5	ABCDEFGH 1234567890	287.4	487.8
m23	ABCDEFGH 1234567890	45	58.2
m32x24	ABCDEFGH 1234567890	34.2	34.8
a7x5	ABCDEFGH 1234567890	258.6	487.8
a9x5	ABCDEFGH 1234567890	187.2	301.2
a9x6	ABCDEFGH 1234567890	195	296.4
Arial 24	ABCDEFGH 1234567890	52.2	66.6
Arial 32	ABCDEFGH 1234567890	32.4	33
ocr 11x7	ABCDEFGH 1234567890	168	264.6
2-lines m5	ABCDEFGH 1234567890 ABCDEFGH 1234567890	174	276
2-lines m7x5	ABCDEFGH 1234567890 ABCDEFGH 1234567890	103.2	170.4
2-lines m15	ABCDEFGH 1234567890 ABCDEFGH 1234567890	38.4	39
4-lines m7x5	ABCDEFGH 1234567890 ABCDEFGH 1234567890 ABCDEFGH 1234567890 ABCDEFGH 1234567890	27.6	41.4
6-lines a7x5	ABCDEFGH 1234567890 ABCDEFGH 1234567890 ABCDEFGH 1234567890 ABCDEFGH 1234567890 ABCDEFGH 1234567890 ABCDEFGH 1234567890	16.8	unavailable
8-lines m5	ABCDEFGH 1234567890 ABCDEFGH 1234567890 ABCDEFGH 1234567890 ABCDEFGH 1234567890 ABCDEFGH 1234567890 ABCDEFGH 1234567890 ABCDEFGH 1234567890 ABCDEFGH 1234567890	16.8	unavailable

Print samples

Barcodes / 1D codes

GS1 128 (EAN 128)	Code 39	2/5 interleaved	EAN 13

2D codes

DMC code square	DMC code rectangle	QR code	DOT code

Nozzle size

70 µm	62 µm	55 µm	50 µm	42 µm

Text variants

italic	bold	blank strokes between strokes	character spacing (blank strokes between characters)	twin stroke / multiple stroke

Formats

Rotate 90°	Rotate 90° clockwise	mirrored	upside down	inverted / negative

Tower fonts

m5t	m7x5t

Languages

АБДЕГЖЛИЯ 12345 小字符喷码机 alphaJET系列 ٣٢١ أ ب ت ج ح خ

Logos



The print samples shown in this overview are for visualization purposes only. The real print images depend on various influencing factors such as e.g. environmental conditions, substrate, surface, etc. We would be happy to provide your personal print sample for your specific application.



5 good reasons to choose alphaJET

01

Due to the low consumption in combination with affordable prices you can save money.

02

Highest production reliability. Machine uptime of more than 99%.

03

Easy integration and high-speed printing increase your productivity.

04

The extensive ink portfolio allows you to react flexibly to customer wishes.

05

A worldwide competent sales and service team supports you at any time.

alphaJET

at a glance

General technical data

Interfaces

- Network (TCP/IP)
- RS 232
- USB (file-management)
- Digital I/O port
- Potential-free programmable alarm relay
- 4-colour signal beacon (option)

Operation

- Touch screen
- User-friendly graphical user interface
- Adjustable user rights
- Modular software code-M
- Windows printer driver

Text composition

- Product counter (with auto-stop function), time functions
- Global Counter (for all print texts)
- DataMatrix, QR code, barcodes, DotCode
- Characters and logos (BMP-format)
- Data fields (can be filled via an interface)
- Prompted fields (input prompt)
- True Type Fonts (international language and character sets)

Product attributes

- Protection class IP 65 (dust-tight and protection against splashed water)
- RE-SOLVE Ultra (solvent recovery)
- User management

Connection values

- Mains voltage (AC) 86 - 264 V, $\pm 10\%$
- max. power consumption 0.5 A / 230 V; 1 A / 110 V

